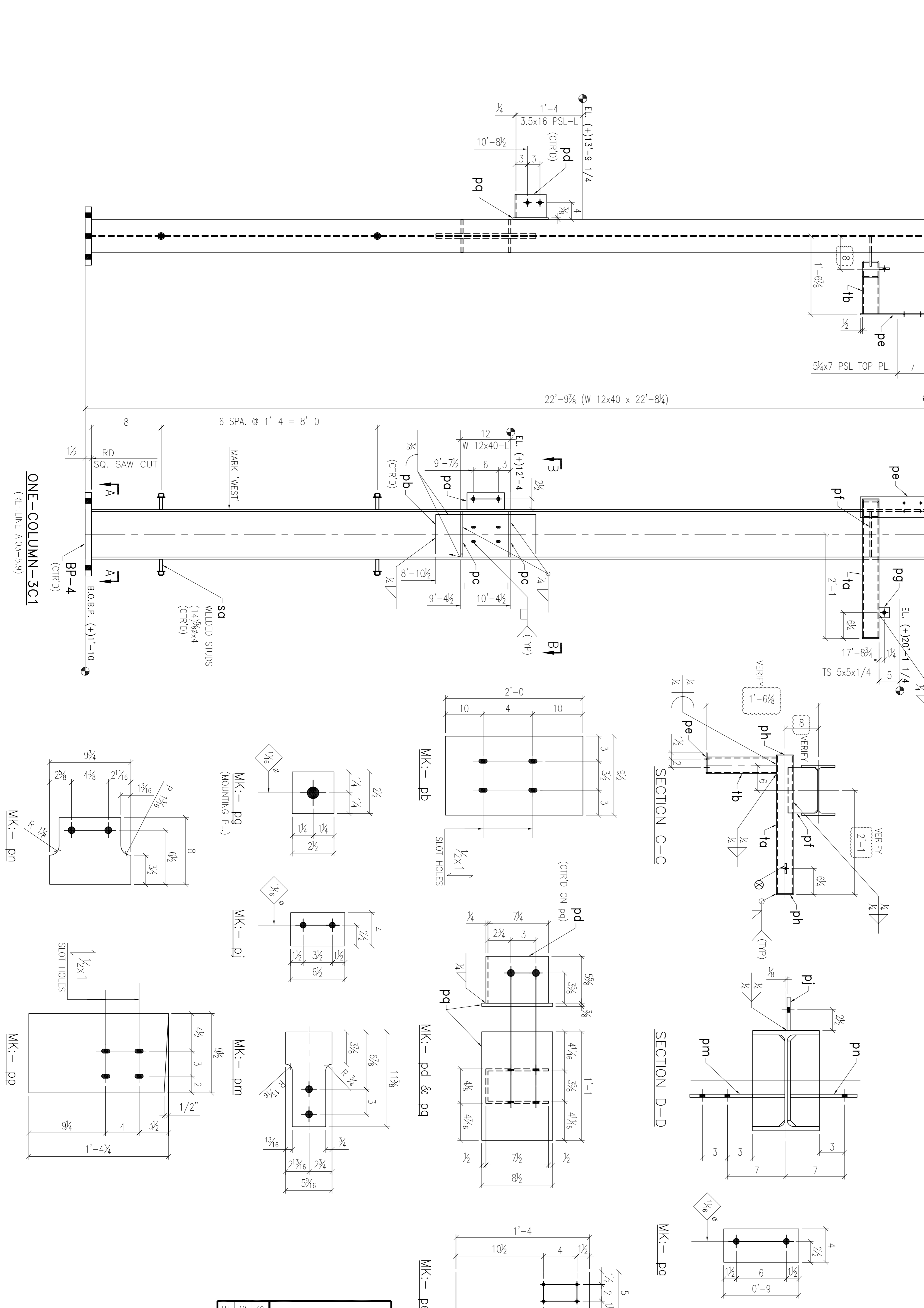
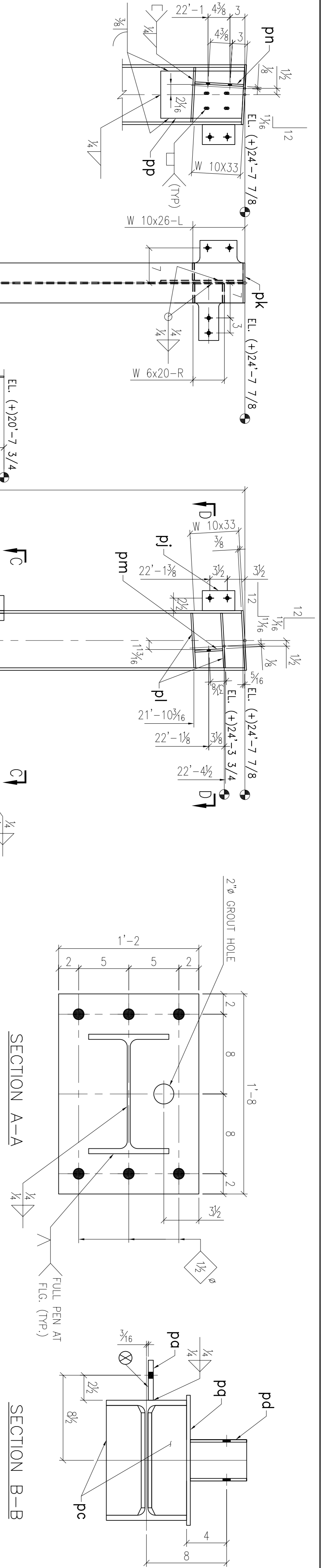


SHIPPING ITEM	SOURCE	DESCRIPTION	LENGTH	DETAIL	REMARKS
NO	ITEM	ITEM	FT	MARK	
ONE	3C1	W 12x40	22		
ONE	BP4	PL 1 1/2 x 14	1		
ONE	pc	PL 1/2 x 4	0		
ONE	pb	PL 3/8 x 9 1/2	2		
ONE	pc	PL 1/2 x 3 3/8	0		
ONE	pd	PL 1/4 x 5 5/8	1		
ONE	pe	PL 1/4 x 5	1		
ONE	pf	PL 3/8 x 7 1/8	0		
ONE	pg	PL 3/8 x 2 1/2	0		
ONE	ph	PL 1/4 x 4	0		
ONE	pj	PL 1/2 x 4	0		
ONE	pk	PL 3/8 x 8	0		
ONE	pl	PL 3/8 x 3 1/2	0		
ONE	pm	PL 3/8 x 5 9/16	0		
ONE	pn	PL 3/8 x 8	0		
ONE	pp	PL 3/8 x 9 1/2	1		
ONE	pq	PL 3/8 x 8	1		
ONE	ta	TS 4x4x1/4	2		
ONE	tb	TS 4x4x1/4	0		
ONE	ts	TSUD 5/8	0		
ONE	so		0		



SHOP NOTE :-
ALL MEMBERS ARE 'AESS'

S.M. NO.	DATE	FAB. AREA	TOTAL WEIGHT	CLEANING
SHOP PAINT : RED OXIDE OIL BASED PRIMER				
ELECTRODES - E70XX				

FIELD BOLTS

2-3/4" x 5 1/8" M-BOLTS w/ N & W
4-1/4" x 4 1/2" SDS w/ W

STANDARD SHOP NOTES
1. EA. END OF MAT'L MAY DEVIATE FROM DIM.'S SHOWN BY 1/2" NORMAL. A6 WILL TOLERANCE FOR LENGTH SQUARE-NESS UN.
2. WELDERS ARE TO USE THE FCAW AND/OR SMAW PROCESS PER AISC D1.1 UNLESS NOTED OTHERWISE.
3. ALL MEMBERS TO BE FABRICATED WITH SHIPPING MARKS ON LEFT HAND END.
4. ALL MAT'L A36 UNLESS NOTED.
5. ALL SHOP BOLTS TO BE A325-N UNLESS NOTED.

ONE-COLUMN-3C1
(REF. LINE A.03-5.9)

